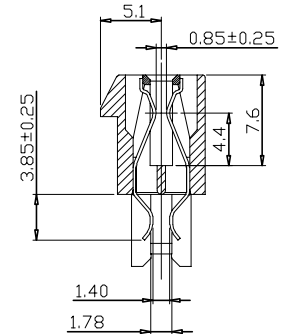
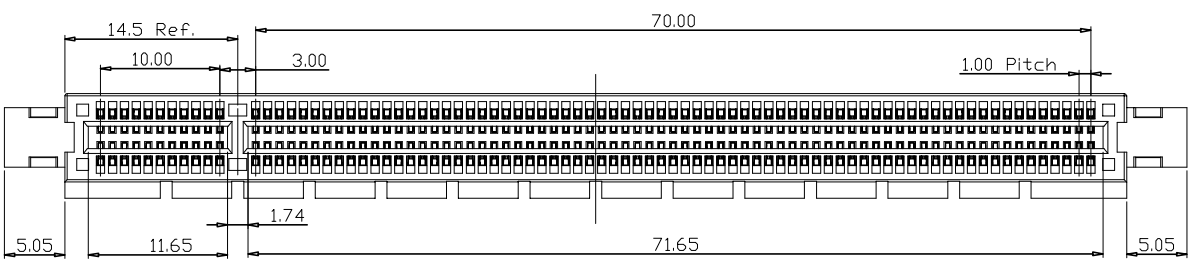
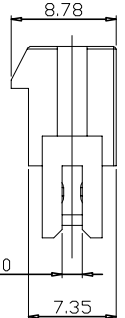


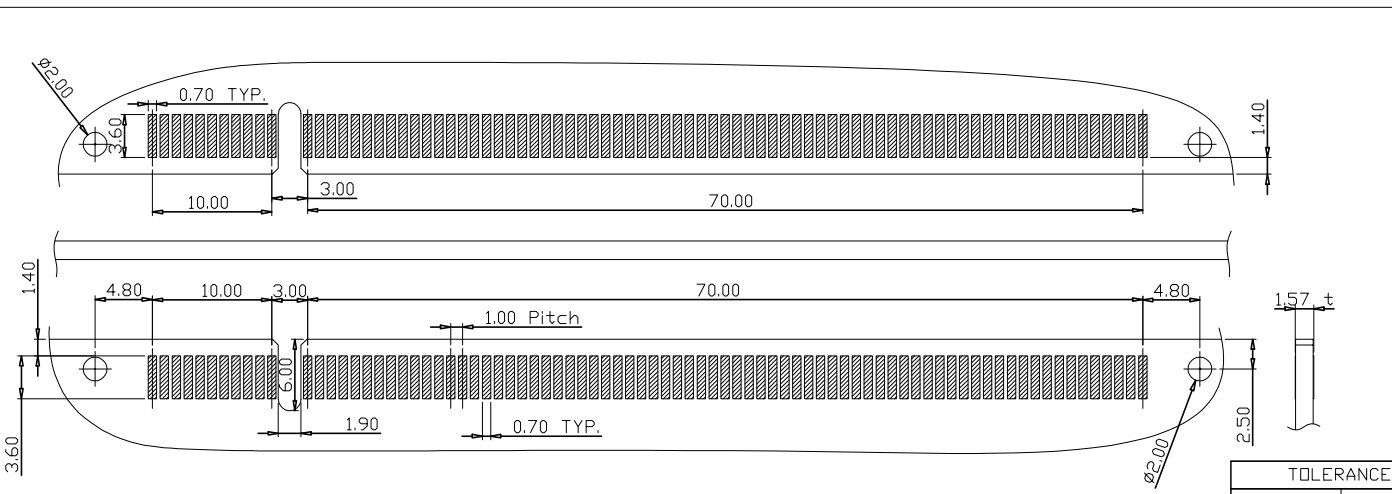
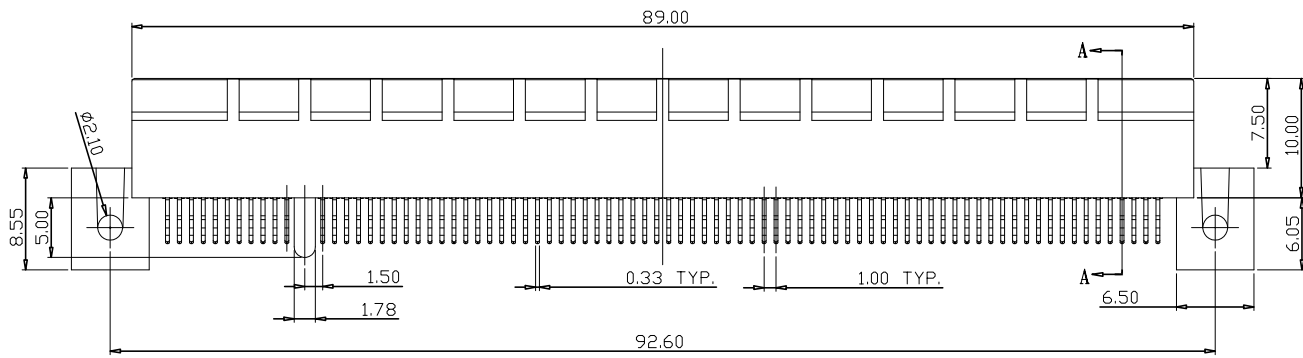
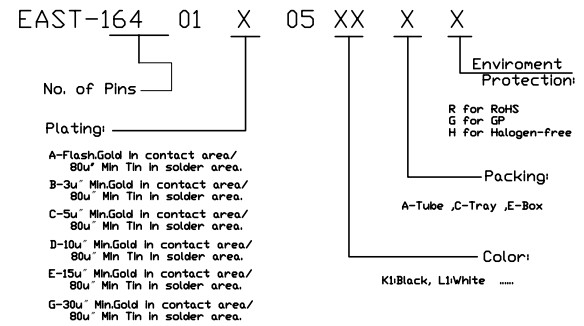
REV	LTR	DESCRIPTION	DATE	DWN
-----	-----	-------------	------	-----



SECTION A-A



ORDER INFORMATION:



NOTES:

- Electrical characteristics:
 - Current rating: 1.1 AMP per contact;
 - Insulation resistance: 1000 Megohms at 500V DC Min;
 - Contact resistance: 30 milliohms Max (initial);
- Mechanical characteristics:
 - Insertion force: 1.15N Max per contact pair;
 - Withdrawal force: 0.15N Min per contact pair;
- Environmental:

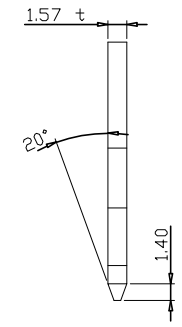
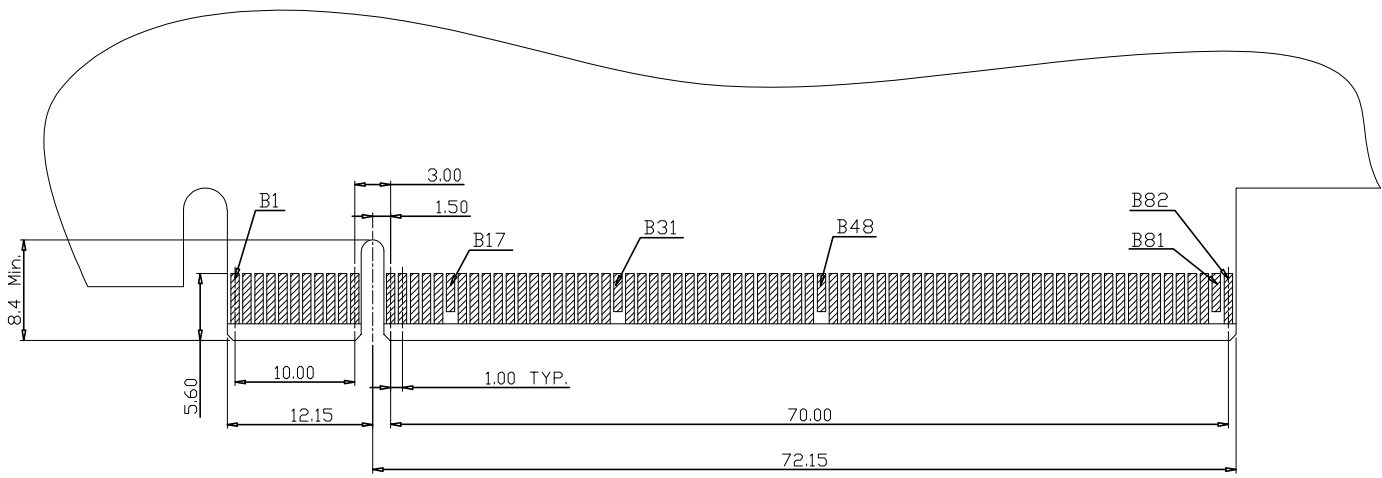
TEMPERATURE RANGE: -55°C to +85°C
- Materials:
 - Housing: LCP+30% G/F, UL94 V-0;
 - contact: Copper Alloy;

plating: Gold plating on contact area;
Tin on solder area;
Nickel underplating over all.

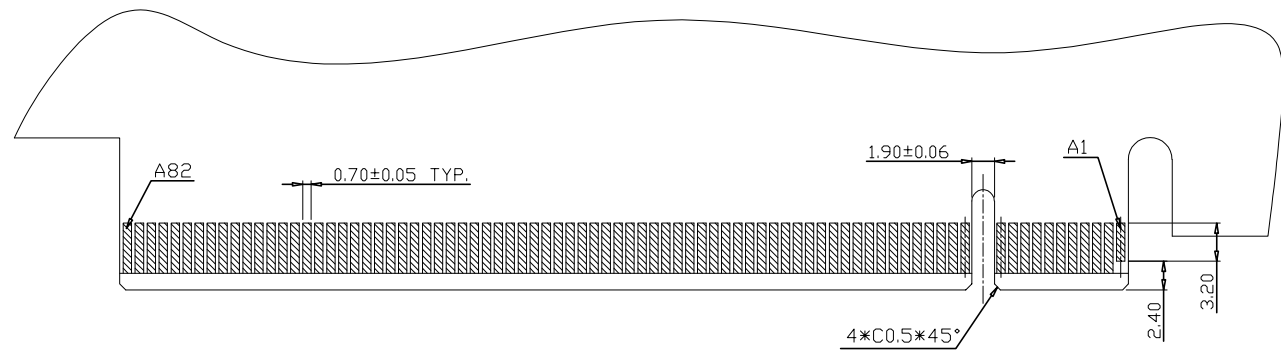
RECOMMENDED PCB LAYOUT TOLERANCE: ±0.05

TOLERANCE		深圳市东方御业科技有限公司		TITLE: PCIe 164P 夹板式带螺丝孔带定位柱			
LINEAR	ANGLES	Tel:0755-33691510 WWW.DFYCONN.COM		PART NO.: SEE TABLE			
X*±0.50	X*±2.0°			DWG NO.: EAST-16401A05K1CR			
.X ±0.38	.X*±1.0°	APPD:	DRWN: Rocky	UNITS	SCALE	SHEET	REV
.XX ±0.25	.XX*±	CHKD:	DATE: 2015-2-5	MM	1:1	1 OF 2	0.1
.XXX ±0.10	.XXX*±						

REV	LTR	DESCRIPTION	DATE	DWN
-----	-----	-------------	------	-----



RECOMMENDED EDGE CARD PATTERN<PRIMARY SIDE>



RECOMMENDED EDGE CARD PATTERN<SECONDARY SIDE>

TOLERANCE		深圳市东方御业科技有限公司 Tel:0755-33691510 WWW.DFYCONN.COM		TITLE: PCIe 164P夹板式带螺丝孔带定位柱				
LINEAR	ANGLES			PART NO.: SEE TABLE				
X.±0.50	X°.±2.0°	APPD:		DRWN: Rocky	UNITS	SCALE	SHEET	REV
.X±0.38	.X°±1.0°			DATE: 2015-2-5				
.XX±0.25	.XX°±	CHKD:						
.XXX±0.10	.XXX°±							