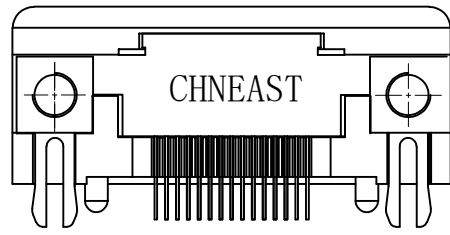
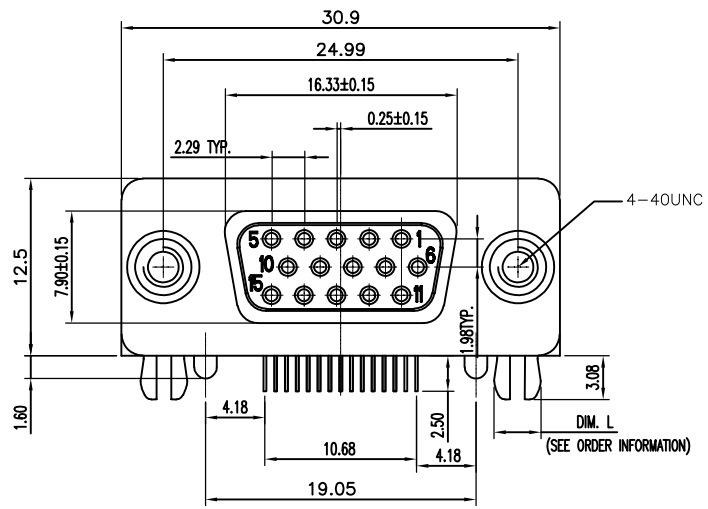
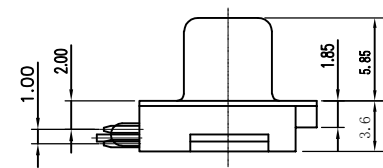


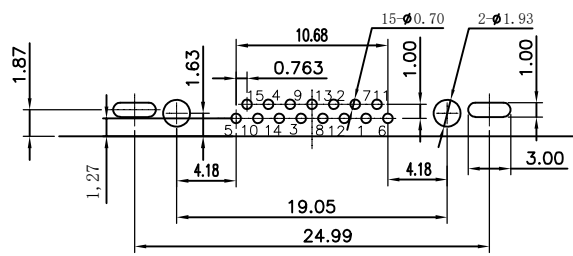
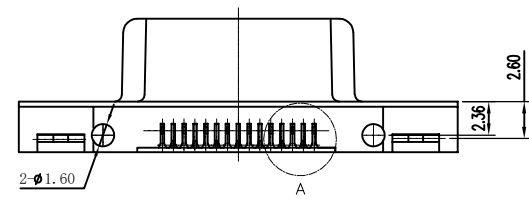
REV.	ECN NO.	MODIFY MATTER	DATE	APPROVED
A		RELEASE TO PRODUCTION		



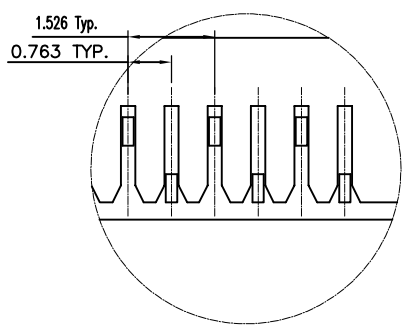
BACK VIEW



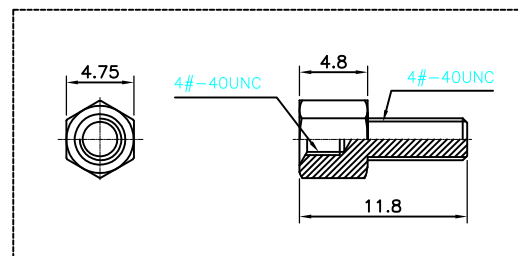
- MATERIAL&PLATING:
 - INSULATOR: SEE ORDER INFORMATION, 30%G.F, UL94V-0
INSULATOR COLOR: SEE TABLE
 - CONTACT: BRASS, GOLD FLASH PLATED IN CONTACT AREA, 80u" MIN TIN PLATED IN SOLDER AREA, 30u" MIN. NICKEL UNDERPLATED OVERALL.
 - SHELL: SPCC, NICKEL PLATED OVERALL.
 - BOARD LOCK: SPCC, TIN PLATED.
 - RIVET: COPPER ALLOY, 30u" MIN. NICKEL UNDERPLATED OVERALL.
 - SCREWLOCK: STEEL, NICKEL PLATED OVERALL.
- SPECIFICATION:
 - CURRENT RATING: 1.0A.
 - CONTACT RESISTANCE: 30mΩ MAX.
 - INSULATION RESISTANCE: 1000MΩ Min.
 - DIELECTRIC WITHSTANDING VOLTAGE: 500V PER MINUTE.
- NOTES:
 - ALL COMPONENTS ARE RoHS COMPLIANT.
 - RESISTANCE TO SOLDERING HEAT: 265°C FOR 5 SECONDS, AND ONLY FOR WAVE SOLDERING PROCESS.



RECOMMENDED P.C.B LAYOUT(PCB THICKNESS: 1.6mm)
COMPONENT SIDE VIEW(TOLERANCE: ±0.05)



DETAIL: A



SCREW VIEW

EAST-SLIM15X060-003

- 颜色: 003 蓝色
005: 黑色
- 螺丝: 0: 锁螺丝4.8*11.8
1: 无螺丝
2: 附螺丝
4: 锁螺丝5.8*11.8
5: 锁螺丝4.8*9.8
6: 锁螺丝5.8*9.8

TOLERANCES UNLESS OTHERWISE SPECIFIED: X. --- X.X ± 0.38 X.XX ± 0.25 X.XXX ± 0.20 Angle ± 3°		CUSTOMER COPY		深圳市东方御业科技有限公司 Tel:0755-2715560 WWW.DFYCONN.COM	
DRAWN: Qinkx		2017/09/10		TITIAL: HDR Slim1.0, 排距1.00mm, 前8后7, 直鱼叉 RoHS (RoHS)	
CHECKED: Chenl		2017/09/10		PART NO: EAST-SLIM15X060-003	
APPROVED: Chenl		2017/09/10		DRAWING NO:	
THESE DRAWING AND SPECIFICATION ARE THE PROPERTY OF Shenzhen Dongfangyue ELECTRONIC CO., LTD. SHALL NOT BE REPRODUCED.		UNIT: mm		SCALE: N/A	
				SHEET: REV.	